

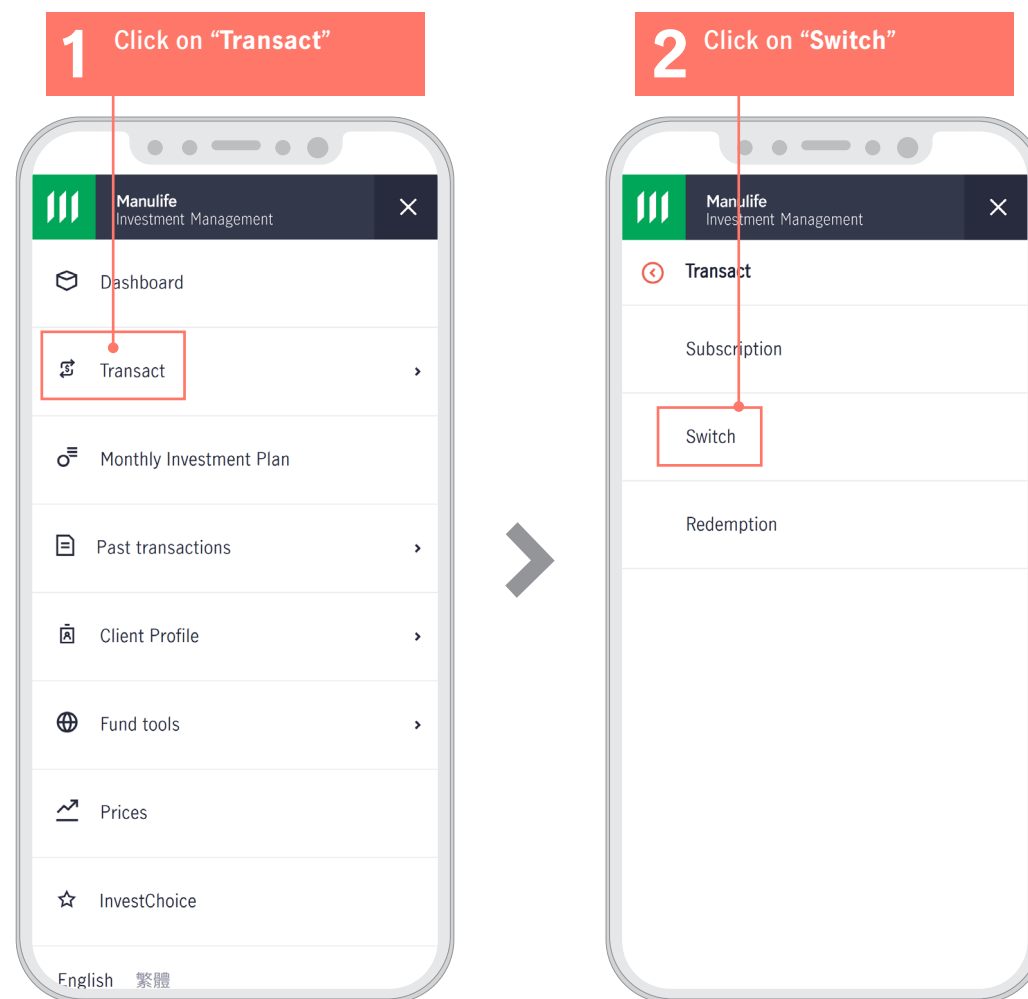
Manulife iFunds: A Quick Guide

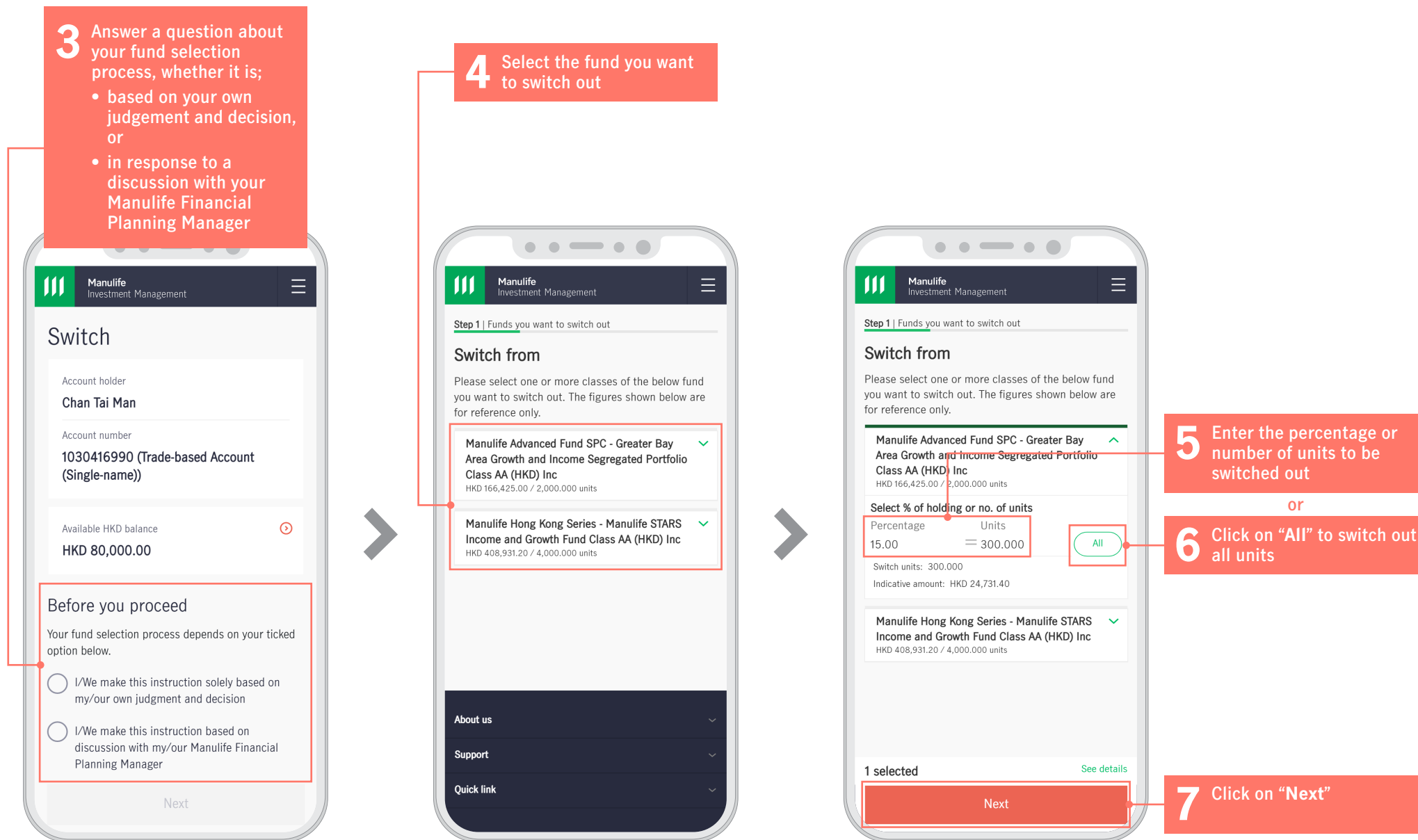
How do I make a transaction?

You can manage your portfolio anytime, anywhere by logging into your Manulife InvestChoice account.

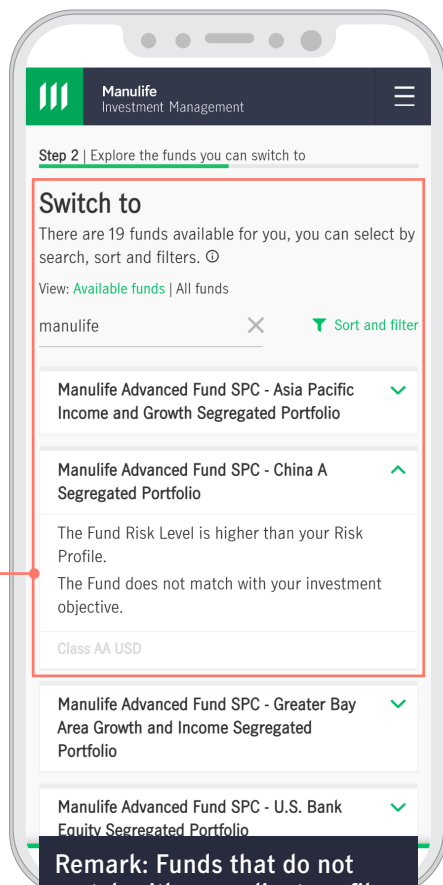
You can place your instructions by clicking on the menu button at the top right hand corner and select the transaction type you want.

Your Financial Planning Manager can always guide you through all of the required steps.

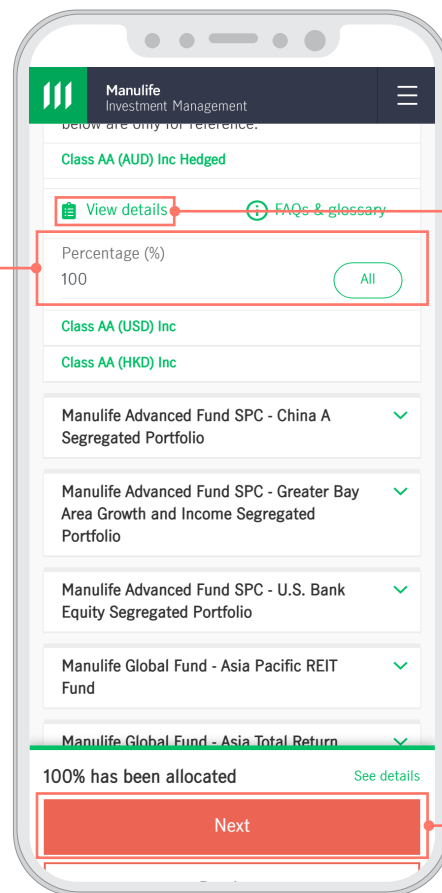




8 A list of funds will be shown. Select the fund and its share class you want to switch



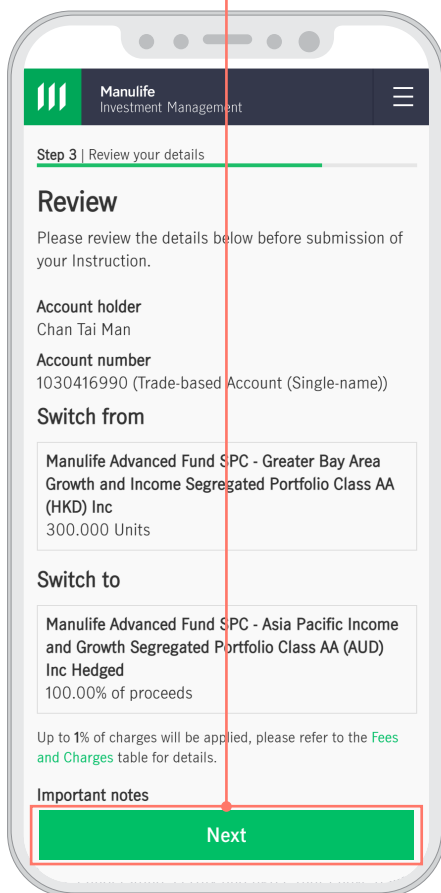
9 Enter the percentage or number of units you want to allocate



10 Click on “View details” to review the details or edit your instructions

11 Click “Next”

12 Click on “Next” after reviewing all of the details and providing the necessary consent



Step 3 | Review your details

Review

Please review the details below before submission of your Instruction.

Account holder
Chan Tai Man

Account number
1030416990 (Trade-based Account (Single-name))

Switch from

Manulife Advanced Fund SPC - Greater Bay Area Growth and Income Segregated Portfolio Class AA (HKD) Inc
300.000 Units

Switch to

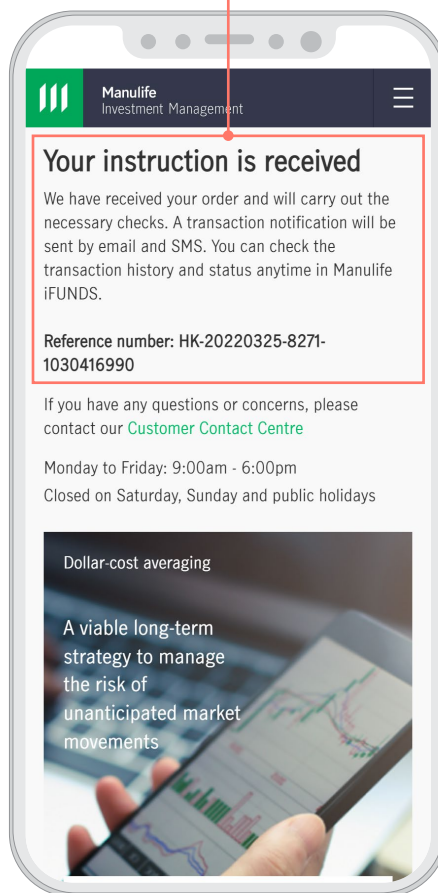
Manulife Advanced Fund SPC - Asia Pacific Income and Growth Segregated Portfolio Class AA (AUD) Inc Hedged
100.00% of proceeds

Up to 1% of charges will be applied, please refer to the [Fees and Charges](#) table for details.

Important notes

Next

13 Receive a thank you page with a reference number



Your instruction is received

We have received your order and will carry out the necessary checks. A transaction notification will be sent by email and SMS. You can check the transaction history and status anytime in Manulife iFUNDS.

Reference number: HK-20220325-8271-1030416990

If you have any questions or concerns, please contact our [Customer Contact Centre](#)

Monday to Friday: 9:00am - 6:00pm
Closed on Saturday, Sunday and public holidays

Dollar-cost averaging

A viable long-term strategy to manage the risk of unanticipated market movements